

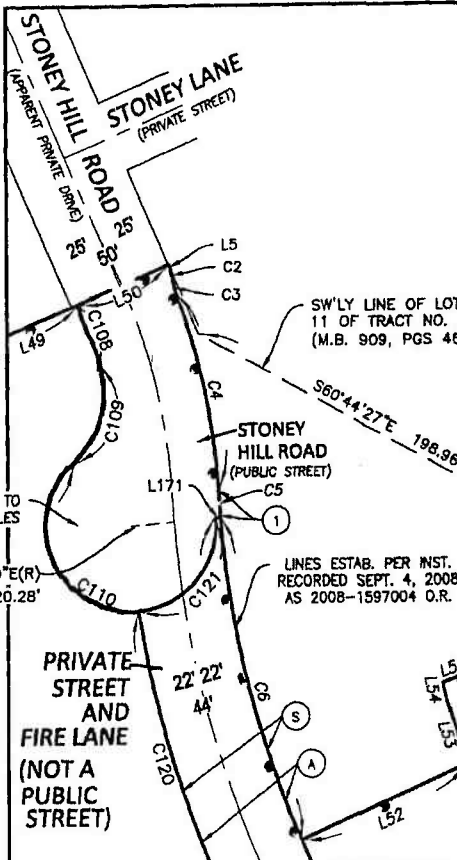
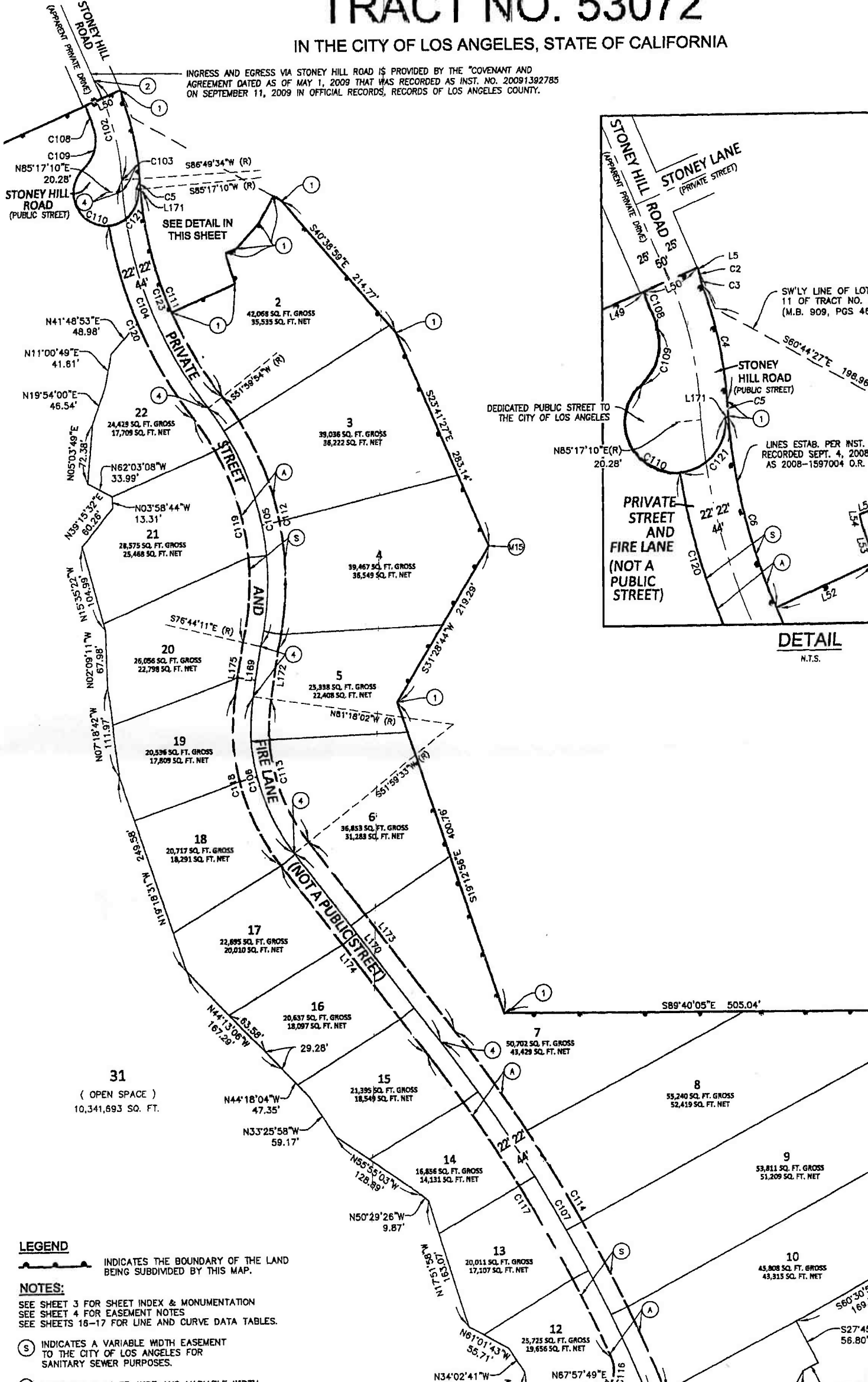
1413/37

SCALE: 1" = 80'

TRACT NO. 53072

IN THE CITY OF LOS ANGELES, STATE OF CALIFORNIA

INGRESS AND EGRESS VIA STONEY HILL ROAD IS PROVIDED BY THE "COVENANT AND AGREEMENT DATED AS OF MAY 1, 2009 THAT WAS RECORDED AS INST. NO. 20091392785 ON SEPTEMBER 11, 2009 IN OFFICIAL RECORDS, RECORDS OF LOS ANGELES COUNTY.



DETAIL
N.T.S.

LEGEND

INDICATES THE BOUNDARY OF THE LAND BEING SUBDIVIDED BY THIS MAP.

NOTES:

SEE SHEET 3 FOR SHEET INDEX & MONUMENTATION
SEE SHEET 4 FOR EASEMENT NOTES
SEE SHEETS 16-17 FOR LINE AND CURVE DATA TABLES.

(S) INDICATES A VARIABLE WIDTH EASEMENT TO THE CITY OF LOS ANGELES FOR SANITARY SEWER PURPOSES.

(1) INDICATES A 44 FT. WIDE AND VARIABLE WIDTH